



Quadros de Bateria de Condensadores

- :: Concebidos para serem equipados com condensadores;
- :: Toda a aparelhagem de comando e proteção é montada em platines;
- :: Nos quadros horizontais, os condensadores são montados exteriormente pela parte inferior;
- :: Os quadros verticais podem ser agrupáveis e os condensadores são montados interiormente;

CARACTERÍSTICAS:

- :: Construção de acordo com EN 60529, EN 50102, EN 62208, com equivalência à classe II de acordo com as RTIEBT;
- :: Pintura epoxy poliéster cinza claro RAL 7035 (cor standard);
- :: Fabricados em chapa de aço laminado a frio (material standard), aço inox ou alumínio;
- :: IP30;
- :: IK09;

Battery Capacitors Cabinets

- :: Conceived to be equipped with capacitors;
- :: All control and protection equipment is in mounting plate;
- :: In horizontal cabinets, the capacitors are mounted externally from the bottom;
- :: The vertical cabinets can be grouped and capacitors are mounted inside;

FEATURES

- :: Construction in accordance with EN 60529, EN 50102, EN 62208, with the equivalence class II according to RTIEBT;
- :: Epoxy polyester light grey paint RAL 7035 (standard color);
- :: Made from mild steel plate (standard material), stainless steel or aluminium;
- :: IP30;
- :: IK09;

QUADROS DE BATERIA DE CONDENSADORES VERTICAIS VERTICAL BATTERY CAPACITORS CABINETS

REFERÊNCIA REFERENCE	DESCRIÇÃO DESCRIPTION	A x L x P H x W x D
EIB 2660050	Quadro de Bateria de Condensadores Verticais	1900X600X600
EIB 2660051		1900X800X600
EIB 2660052	Vertical Battery Capacitors Cabinet	2100X600X600
EIB 2660053		2100X800X600

Quadros constituídos por: estrutura base, rodapé, painéis laterais, painel posterior, painel superior, porta, platine, apoios para condensadores e argolas.
Cabinets consisting by: base structure, baseboard, side panels, back panel, top panel, door, mounting plate, supports for capacitors and rings.

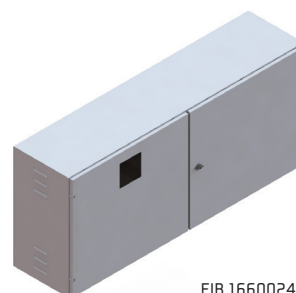
QUADROS DE BATERIA DE CONDENSADORES HORIZONTAIS HORIZONTAL BATTERY CAPACITORS CABINETS

REFERÊNCIA REFERENCE	DESCRIÇÃO DESCRIPTION	A x L x P H x W x D	
EIB 1660016	Quadro de Bateria de Condensadores Horizontais	500X400X350	
EIB 1660017		500X550X350	
EIB 1660018		660X600X350	
EIB 1660019		660X800X350	
EIB 1660020		660X900X350	
EIB 1660021		660X1000X350	
EIB 1660022		660X1250X350	
EIB 1660023		660X1400X350	
EIB 1660024		660X1500X350	
EIB 1660025		Horizontal Battery Capacitors Cabinet	800X600X350
EIB 1660026			800X800X350
EIB 1660027			800X900X350
EIB 1660028			800X1000X350
EIB 1660029	800X1250X350		
EIB 1660030	800X1400X350		
EIB 1660031	800X1500X350		

Quadros constituídos por: caixa base, portas e platine.
Cabinets consisting by: base box, doors and mounting plate.



EIB 2660052



EIB 1660024