

### Caixas de Coluna

- :: Para a zona comum no interior dos edifícios;
- :: Equipadas com platines em chapa de ferro galvanizada;
- :: Para montagem saliente ou de embutir;

### CARACTERÍSTICAS

- :: Do tipo CAD, CAQ, CBD e CBQ;
- :: De 32A e 63A;
- :: De 1 ou 2 saídas e 3 ou 4 saídas;
- :: Construção de acordo com NP 1271, EN 61439, EN 60529, EN 50102 e EN 62208, com equivalência à classe II de acordo com as RTIEBT;
- :: Pintura epoxy poliéster cinza claro RAL 7035 (cor standard);
- :: Fabricadas em chapa de aço laminado a frio (material standard), aço inox ou alumínio;
- :: IP43 ou 54;
- :: IK09;

### Column Boxes

- :: For common area inside buildings;
- :: Equipped with galvanized iron sheet mounting plates;
- :: For surface mounting or imbuing;

### FEATURES

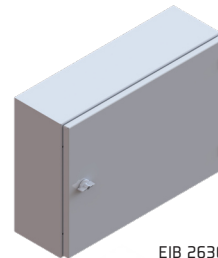
- :: Type CAD, CAQ, CBD and CBQ;
- :: Of 32A and 63A;
- :: Of 1 or 2 outputs and 3 or 4 outputs;
- :: Construction in accordance with NP 1271, EN 61439, EN 60529, EN 50102 and EN 62208, with the equivalence class II according to RTIEBT;
- :: Epoxy polyester light grey paint RAL 7035 (standard color);
- :: Made from mild steel plate (standard material), stainless steel or aluminium;
- :: IP43 or 54;
- :: IK09;

## CAIXAS DE COLUNA COLUMN BOXES

REFERÊNCIA   REFERENCE		TIPO TYPE	A x L x P H x W x D
IP43	IP54		
EIB 2630046	EIB 2630050	CAD	350X400X160
EIB 2630047	EIB 2630051	CAQ	450X400X160
EIB 2630048	EIB 2630052	CBD	400X550X160
EIB 2630049	EIB 2630053	CBQ	500X550X160

Caixas constituídas por: caixa base, porta e platine.

Boxes consisting by: base box, door and mounting plate.



EIB 2630052